

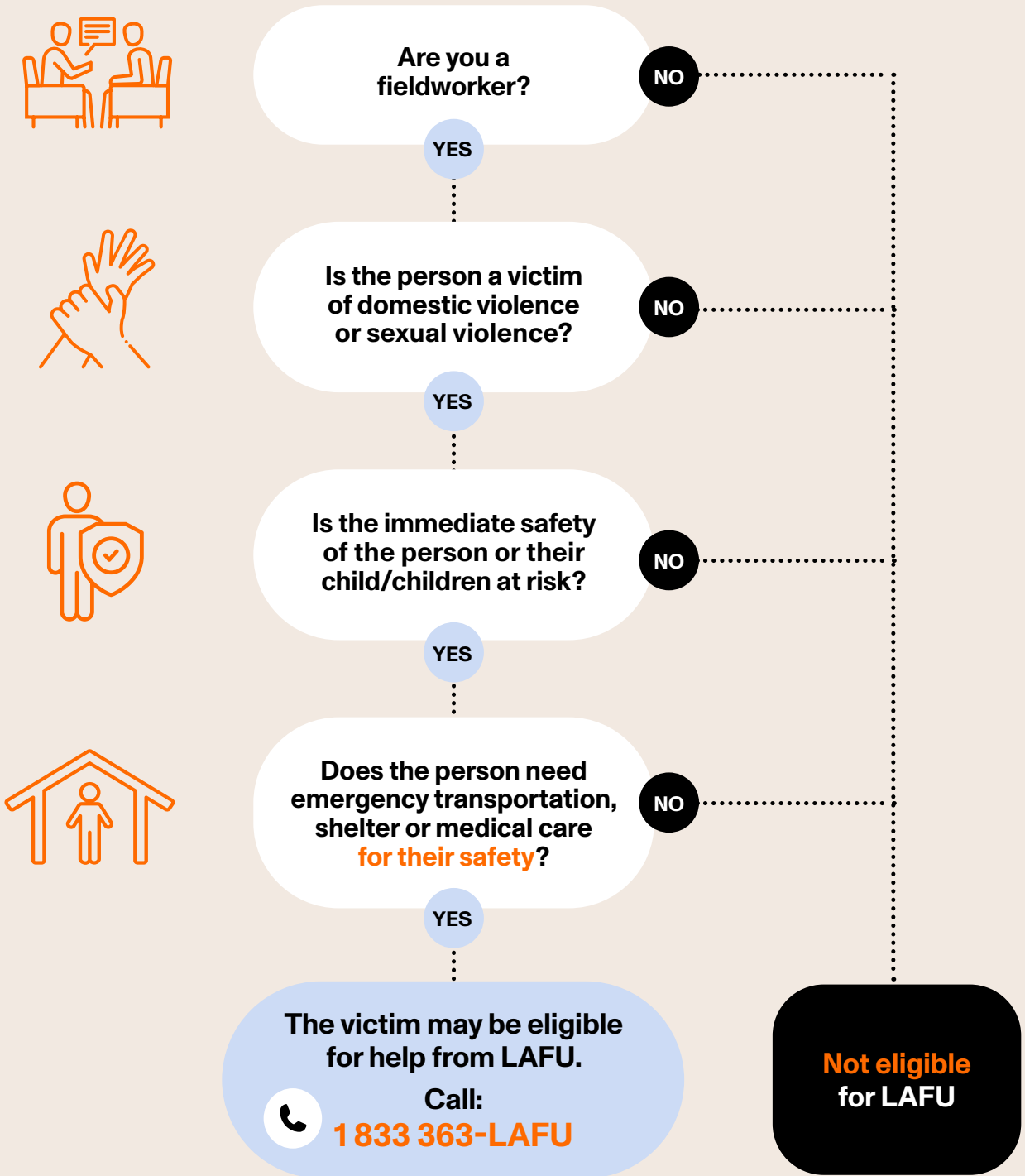
DECISION GUIDE

for emergency financial assistance applications



Thinking of applying on behalf of a victim?

Is emergency financial assistance right for them? Use this guide to determine whether the victim might be eligible for help from the Emergency Financial Assistance Line (LAFU).



Questions? Visit www.lafu.ca/en or call a LAFU caseworker at **1 833 363-LAFU (5238)**.

It's preferable to be with the victim when you contact LAFU. Otherwise, make sure you can reach the victim easily.